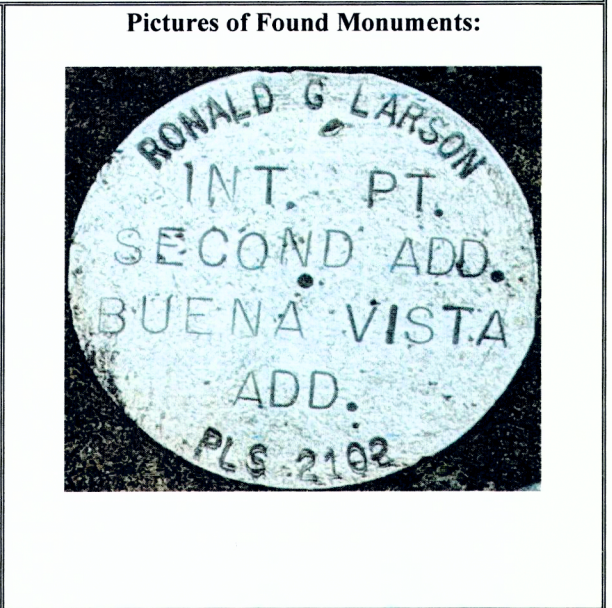
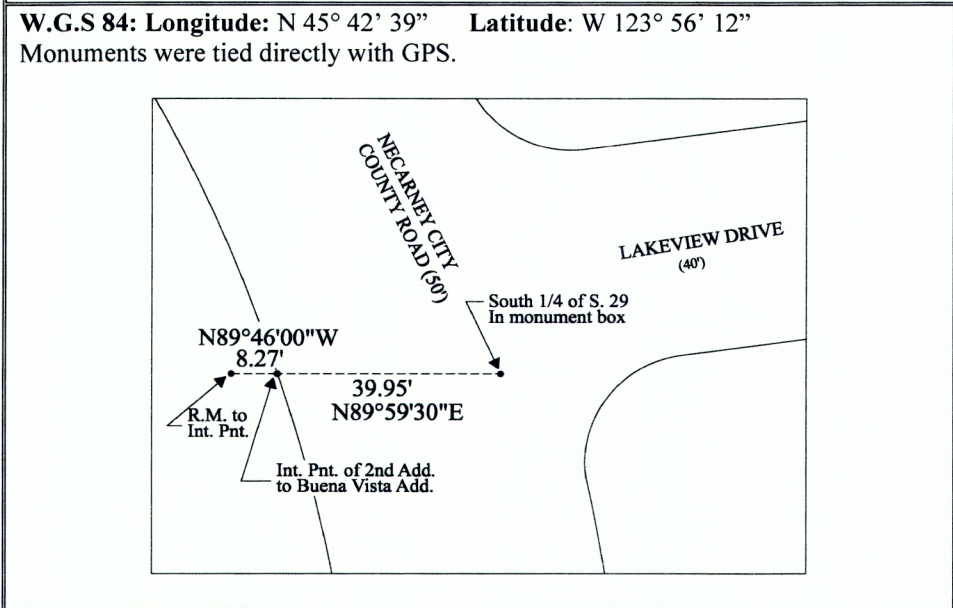


SECTION: 29 & 32	TOWNSHIP: 3 NORTH	RANGE: 10 WEST
COUNTY: Tillamook		DATE: 12/2020
CORNER DESIGNATION: Initial Point for the Second Addition to Buena Vista Addition		(Please check one)
		<input type="checkbox"/> Condition Report Only
		<input type="checkbox"/> Restoration
		<input checked="" type="checkbox"/> Rewitness
		<input type="checkbox"/> Unrecorded
		<input type="checkbox"/> Reset at surface
		<input type="checkbox"/> Referenced Out

Previous Rewitnesses, Restorations and Surveys, etc.. A-886 (1960), B-893 (1980), B-1470 (1990), C-378 (1976), C-394 (1979)
Rewitness card # 155 (1981).

History, condition and sources: In 1976 the Second Addition to Buena Vista Addition was created and a 2" iron pipe was set on the section line common to sections 29 and 32 for the Initial point of the subdivision. In 1981 The Tillamook County Surveyor's office monumented the initial point of the subdivision, they placed an iron pipe with a 3" brass cap in concrete for the Int. Pnt. In 1990 (B-1470) Ron Larson Set a 2" aluminum pipe with a 3 1/4" Aluminum Cap stamped as shown hereon for the Int. Pnt. of the subdivision. In 2020 the Tillamook County Surveyors Dept. discovered that the drawing of the stamped cap in Rewitness Card # 155 does not match the description of the found Int. Pnt.. GPS static ties were taken and compared with record ties and it was determined the Aluminum Cap set on map B-1470 is in the true position for the initial point of the subdivision and the Brass Cap set by the County Surveyors office in 1981 was found to be N 89° 46' 00" W 8.27' of the true position for the Initial Point. The County Surveyors Brass Cap is now stamped "RM" and is changed to a Reference Monument for the Initial Point of the Subdivision.

(B-1470, 1990) – Location tag on steel fence 7.0' West. **Not Found**



New accessories set:

Set: 72" hat section post with a white reflector and yellow metal location tag. West ±5.5'.

Found: T.C. 3" brass cap from RW #155, changed stamp to read "RM" for reference monument to the Int. Pnt. of the 2nd Addition to Buena Vista Addition. N 89° 46' 00" W 8.27'

Location & Comments: Monument is on the west side of the intersection of Necarney City County Road and Lakeview Drive Manzanita, Oregon.

Tillamook County Surveyor office:
1510 3rd Street Suite C, Tillamook, OR. 97141

Party Chief: Terry Jones, P.L.S. 2507, Survey Supervisor

Witnesses: Travis Porter, Survey Tech.

Notes: Digital images taken of monument and accessories.

SURVEYOR'S SEAL